



Simplify your GC Connections



- Chemically inert
- Superb operational stability
- Low dead volume
- Easy to install and leak free

www.sge.com



AUSTRALIA & PACIFIC REGION

CHINA

EUROPE

INDIA

JAPAN

MIDDLE EAST

USA

SGE Recognizes the Importance of Connections in Your GC



Currently available connectors suffer from issues with reliability, robustness, excessive dead volumes and inertness, leading to poor chromatography and instrument down time.

SGE's range of GC Connections are designed to minimize your time spent on installation. Our range includes:

- **SilTite™ μ -union** - designed to connect columns without the complications of conventional connectors.
- **SilFlow™ microchannel device (MCD)** - for your column splitting needs, ensures no detectable peak distortion is observed through precise channel and ferrule design.
- **SilTite™ FingerTite** systems for each injector and detector, simplify your GC column installation.

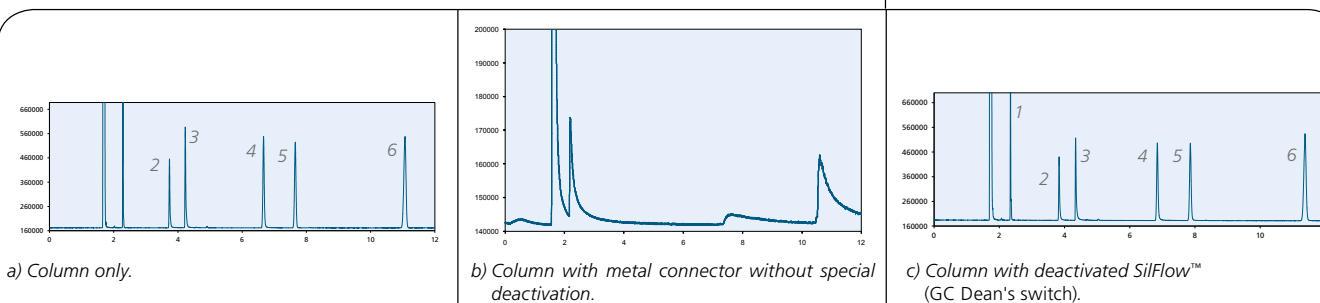
SGE GC Connections deliver these enhanced chromatography features:

- **Chemically inert**

Enabled by SGE's expertise in surface chemistry, each metal surface is treated to ensure optimized chromatography.

Figures a and b: Impact of non-deactivated metal surfaces on chromatography: Lost peaks and poor resolution.

Figure c: Fully resolved peaks and retention of analytes when using SGE's GC Connections.



Column: BPX5 30 m x 0.25 mm ID x 0.25 μ m (PIN 054101)
Column Temperature: 140 °C
FID Temperature: 380 °C
Injector Temperature: 240 °C
Sample: 1 ng on-column of (1) n-Decane (2) 4-chlorophenol (3) n-Decylamine (4) Undecanol (5) Bi phenyl (6) Pentadecane

- **Superb operational stability**

All of SGE's GC Connections are manufactured from high grade stainless steel, and have minimal thermal mass, ensuring there is minimal thermal lag during use. The use of stainless steel also means there is no practical limit to their maximum temperature, the only limitation is the temperature rating of the GC column.

- **Low dead volume**

SilTite™ FingerTite and SilFlow™ FingerTite ferrules used in SGE GC Connections result in low dead volume fittings giving you optimal peak shapes.

- **Easy to install and leak free**

Each of SGE's GC Connections are designed with FingerTite fittings that are easy to set up and can be tightened using finger force to achieve a perfect, reliable seal, even for the most sensitive MS systems – no wrenches required!

SilTite™ μ -Union

The SilTite™ μ -union is a connector for GC Capillary columns. It is useful for connecting a pre-column or a guard column. This tiny connection will make a big difference to your chromatography!

Low thermal mass: 9 mm in length and mass <0.5 g.

Available in kits to connect a range of columns from 0.1 mm ID through to 0.53 mm ID.

Kits contain:

5 x ferrules

2 x union fittings

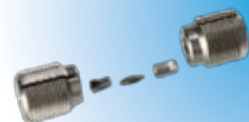
Installation jigs

Installation instructions

Part Number	Column 1 ID (mm)	Column 2 ID (mm)
073560	0.1 – 0.25	0.1 – 0.25
073561	0.1 – 0.25	0.32
073562	0.1 – 0.25	0.53
073563	0.32	0.32
073564	0.32	0.53
073565	0.53	0.53

Replacement parts available – contact your local SGE office or Authorized Distributor.

The SilTite™ μ -union comes fitted standard when you order an SGE GC Capillary column with integrated guard (5 m). Just add SGXX to the end of the column part number where XX is the column ID e.g. 054101SG32 for a 0.32 mm ID guard on column part number 054101.



SilFlow™

SilFlow™ micro fluidic platform enables maximum chromatography performance. Common uses include column switching and splitting, back flushing, GC x GC.

SilFlow™ microchannel device (MCD) available - 3 and 4 port GC splitters, and a Deans' switch MCD, perfect for multidimensional analyses and comprehensive chromatography.



SilFlow™ GC 3 Port Splitter



SilFlow™ GC 4 Port Splitter



SilFlow™ GC Deans' Switch



SilFlow™ Ferrules and Nut

SilTite™ FingerTite Tool

SilTite™ FingerTite Injector and Detector Ferrules

- The next generation ferrule system for gas chromatography systems (Agilent, Thermo, PerkinElmer, Bruker/Varian and Shimadzu)
- Simplifies GC column installation
- Reduces background noise in sensitive MS applications
- Available in injector / detector or detector only kits



	100 % Graphite	Graphite Vespel®	SilTite™ FingerTite
Mechanical Strength	Soft	Hard	Hard
Temperature Limit	450 °C	350 °C	No practical limit
Grip strength on column	Soft	Moderate	Strong
Doesn't need retightening after installation	✓	x	✓
Ideal for GC-MS applications (minimal porosity)	x	✓	✓
No tools required for installation and removal	x	x	✓
Permanent positioning of ferrule	x	x / ✓	✓
No deterioration	x	x	✓
Cannot break the capillary column with over-tightening	x	x	✓
No column creep	x	x	✓
Chemically inert	x	x	✓



The SilTite™ FingerTite ferrule requires a unique adapter to enable the finger force connection. Purchase one of the starter kits with the corresponding adapters for your system, complete the one off 5 minute install using the instructions provided, and you are ready to go!

AUSTRALIA & PACIFIC REGION

SGE Analytical Science Pty Ltd
 Toll Free: 1800 800 167
 Tel: +61 (0) 3 9837 4200
 Fax: +61 (0) 3 9874 5672
 Email: support@sge.com

CHINA

SGE Shanghai Representative Office
 Tel: +86 21 6407 9382
 Fax: +86 21 6407 9386
 Email: china@sge.com

MIDDLE EAST

SGE Gulf
 Tel: +971 6 557 3341
 Fax: +971 6 557 3541
 Email: gulfsupport@sge.com

EUROPE

SGE Europe Ltd
 European Head Office
 Toll Free: 00800 2790 8999
 Toll Free Fax: 00800 2626 2609
 Tel: +44 1908 568 844
 Fax: +44 1908 566 790
 Tel France: +33 1 69 29 80 90
 Fax France: +33 1 69 29 09 25
 Tel Germany: +49 (0) 6155 / 60746 0
 Fax Germany: +49 (0) 6155 / 60746 50
 Email: europe@sge.com

INDIA

SGE Laboratory Accessories Pvt Ltd
 Tel: +91 22 24715896
 Fax: +91 22 24716592
 Email: sgeindia@vsnl.com

UNITED STATES OF AMERICA

SGE Incorporated
 Toll Free: (800) 945 6154
 Tel: +1 512 837 7190
 Fax: +1 512 836 9159
 Email: usa@sge.com

JAPAN

SGE Japan Inc
 Tel: +81 45 222 2885
 Fax: +81 45 222 2887
 Email: japan@sge.com

